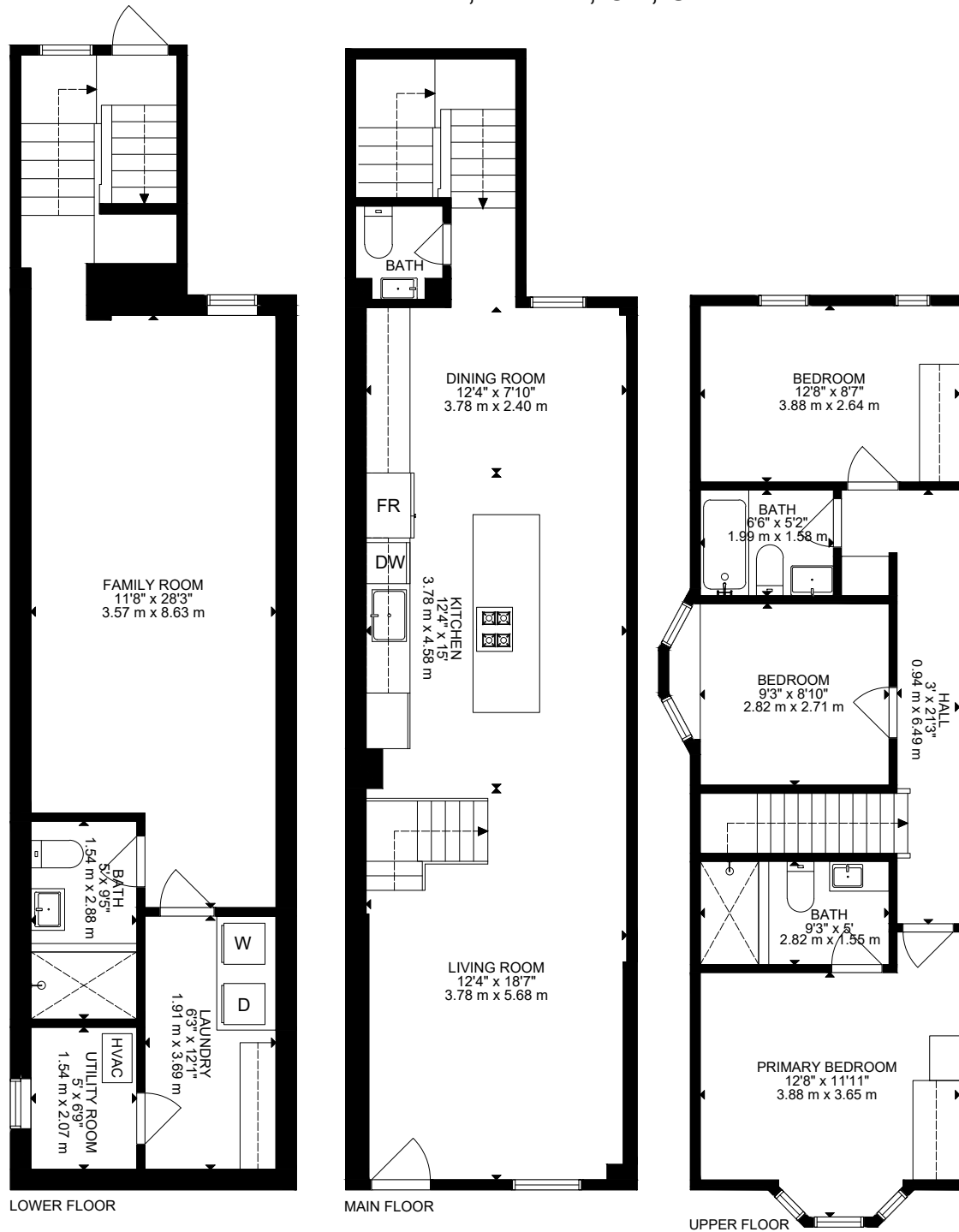


112 Pendrith Street, Toronto, ON, Canada



GROSS INTERNAL AREA  
 MAIN FLOOR: 688 SQ FT, 64 m<sup>2</sup>, UPPER FLOOR : 626 SQ FT, 58 m<sup>2</sup>, LOWER FLOOR: 688 SQ FT, 64 m<sup>2</sup>  
 TOTAL: 2002 SQ FT, 186 m<sup>2</sup>

SIZE AND DIMENSIONS ARE APPROXIMATE, ACTUAL MAY VARY